

GOLD'S GYM[®]

MAX PACK

Model No. GGMC0724.0

Serial No. _____

(Write the serial number in the space above for reference.)

QUESTIONS?

As a manufacturer, we are committed to providing complete customer satisfaction. If you have questions, or if a part is damaged or missing, PLEASE CONTACT OUR CUSTOMER SERVICE DEPARTMENT DIRECTLY.

CALL TOLL-FREE:

1-877-776-4777

Mon.–Fri., 6 a.m.–6 p.m. MST

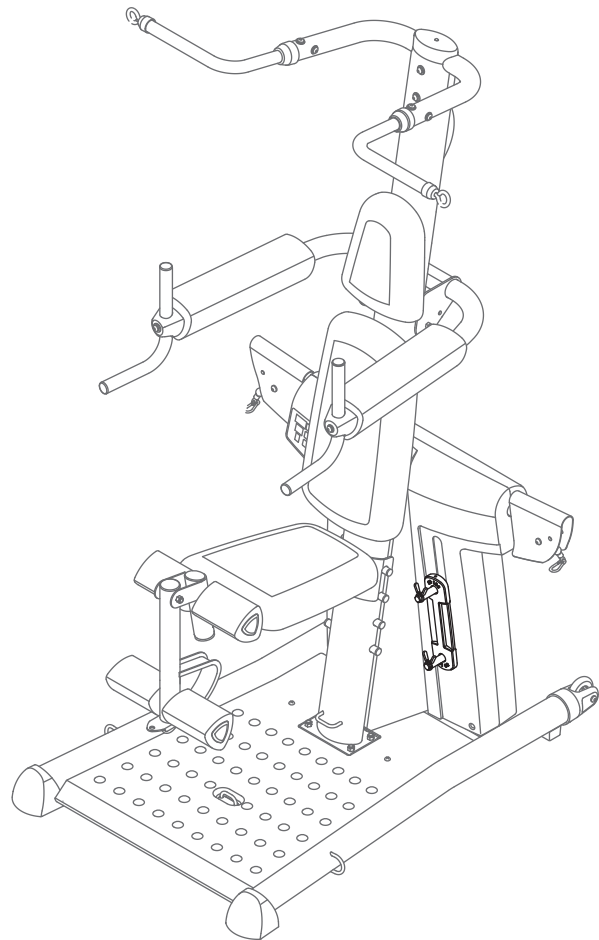
ON THE WEB:


www.goldsgympowerflex.com

CAUTION

Read all precautions and instructions in this manual before using this equipment. Save this manual for future reference.

USER'S MANUAL



 **WARNING:** To reduce the risk of serious injury, read the following important precautions before using the resistance system MAX PACK.

1. Read all instructions in this manual and in the literature accompanying the resistance system before using the resistance system. Use the resistance system only as described in the literature.
2. Keep hands and feet away from moving parts.
3. It is the responsibility of the owner to ensure that all users of the resistance system are adequately informed of all precautions.
4. Use only the bands included with a GOLD'S GYM MAX PACK.

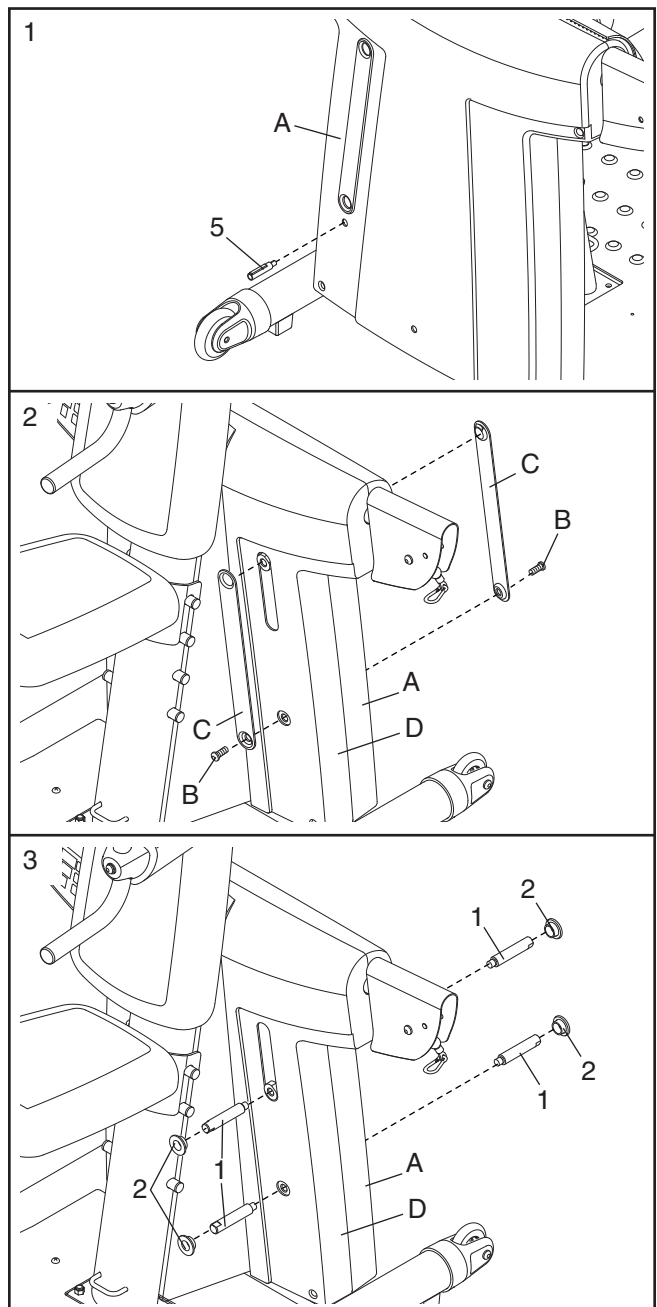
BEFORE YOU BEGIN

Thank you for selecting the GOLD'S GYM® MAX PACK resistance system accessory. The MAX PACK is designed to increase the amount of resistance available on GOLD'S GYM POWER FLEX resistance systems. The MAX PACK provides progressive resistance. As the bands begin to stretch, the amount of resistance will increase gradually. As the bands stretch further, the resistance will increase rapidly.

For your benefit, read this manual carefully before using the MAX PACK and the resistance system. If you have questions after reading this manual, see the front cover of this manual. To help us assist you, please note the product model number and serial number before calling. The model number is GGMC0724.0. The serial number can be found on the product packaging. Record the serial number on the front cover of this manual.

ASSEMBLY

1. Plug the Sensor (5) into the indicated hole in the Back Mech Cover (A).
2. Remove the two Screws (B) and the two Cover Panels (C) from the Mech Covers (A, D).
3. Attach the four Band Axles (1) to the Mech Covers (A, D). Slide the four Bushings (2) onto the Band Axles.



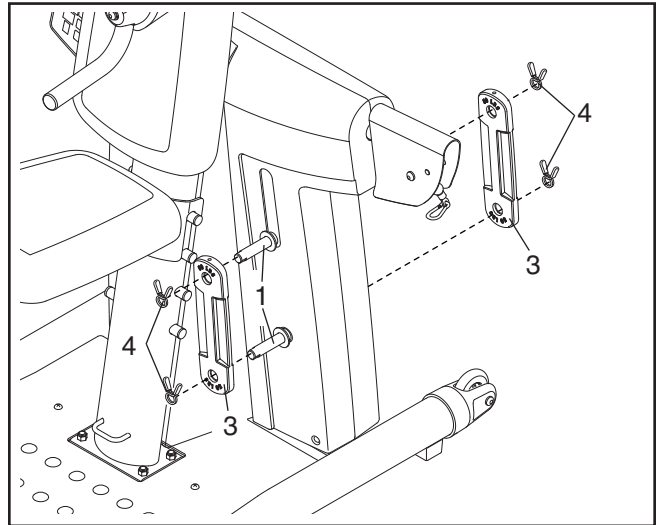
ADJUSTMENTS

Make sure all parts are properly tightened each time the resistance system is used. Replace any worn parts immediately. The resistance system can be cleaned with a damp cloth and a mild, non-abrasive detergent. Do not use solvents.

ADJUSTING THE RESISTANCE

Slide the Bands (3) onto the Band Axles (1). Secure the Bands with the four Spring Clips (4).

⚠ WARNING: Always make sure there are an equal number of Bands (3) on each set of Band Axles (1). Always secure the Bands with the Spring Clips (4).

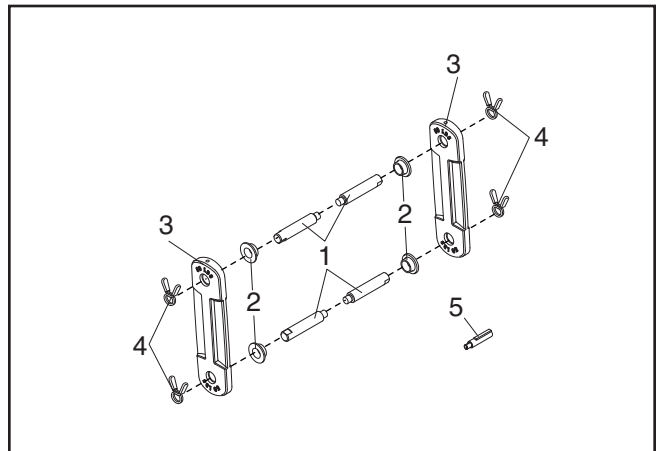


PART LIST/EXPLODED DRAWING— Model No. GGMC0724.0

R1005A

Key No.	Qty.	Description
1	4	Band Axle
2	4	Bushing
3	2	Band
4	4	Spring Clip
5	1	Sensor
#	1	User's Manual

Note: “#” indicates a non-illustrated part.
Specifications are subject to change without notice.



ORDERING REPLACEMENT PARTS

To order replacement parts, see the front cover of this manual. To help us assist you, please be prepared to give the following information:

1. The MODEL NUMBER of the product (GGMC0724.0)
2. The NAME of the product (GOLD'S GYM MAX PACK)
3. The SERIAL NUMBER of the product (see the front cover of this manual)
4. The KEY NUMBER and DESCRIPTION of the part(s) (see the PART LIST/EXPLODED DRAWING on page 3 of this manual).

GOLD'S GYM is a registered trademark of Gold's Gym International, Inc. This product is manufactured and distributed under license from Gold's Gym International, Inc.

LIMITED WARRANTY

ICON Health & Fitness, Inc. (ICON), warrants this product to be free from defects in workmanship and material, under normal use and service conditions, for a period of ninety (90) days from the date of purchase. This warranty extends only to the original purchaser. ICON's obligation under this warranty is limited to replacing or repairing, at ICON's option, the product through one of its authorized service centers. All repairs for which warranty claims are made must be pre-authorized by ICON. If the product is shipped to a service center, freight charges to and from the service center will be the customer's responsibility. For in-home service, the customer will be responsible for a minimal trip charge. This warranty does not extend to any product or damage to a product caused by or attributable to freight damage, abuse, misuse, improper or abnormal usage or repairs not provided by an ICON authorized service center; products used for commercial or rental purposes; or products used as store display models. No other warranty beyond that specifically set forth above is authorized by ICON.

ICON is not responsible or liable for indirect, special or consequential damages arising out of or in connection with the use or performance of the product or damages with respect to any economic loss, loss of property, loss of revenues or profits, loss of enjoyment or use, costs of removal or installation or other consequential damages of whatsoever nature. Some states do not allow the exclusion or limitation of incidental or consequential damages. Accordingly, the above limitation may not apply to you.

The warranty extended hereunder is in lieu of any and all other warranties and any implied warranties of merchantability or fitness for a particular purpose is limited in its scope and duration to the terms set forth herein. Some states do not allow limitations on how long an implied warranty lasts. Accordingly, the above limitation may not apply to you.

This warranty gives you specific legal rights. You may also have other rights which vary from state to state.

ICON HEALTH & FITNESS, INC., 1500 S. 1000 W., LOGAN, UT 84321-9813